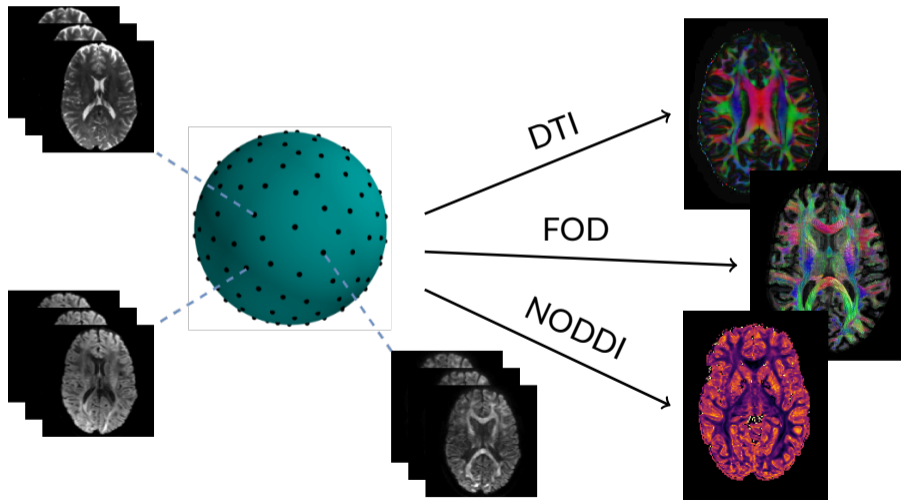


Spatio-Angular Convolutions for Super-resolution in Diffusion MRI

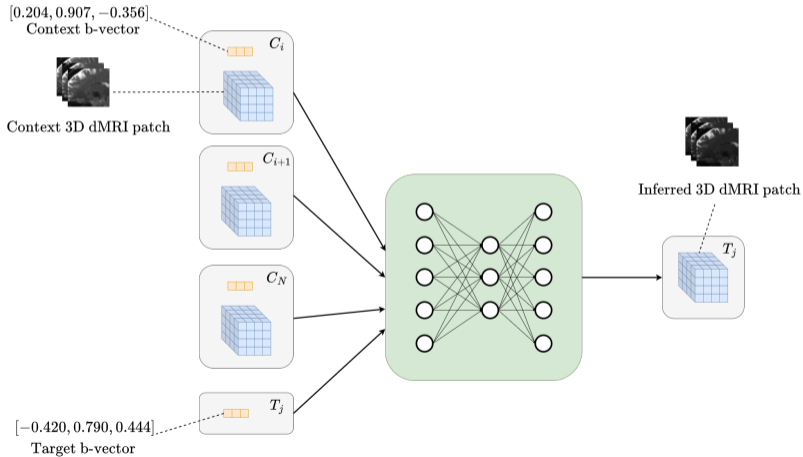
Matthew Lyon¹ Paul Armitage² Mauricio A Álvarez¹

¹University of Manchester ²University of Sheffield

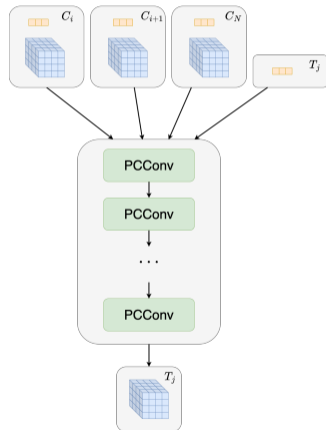
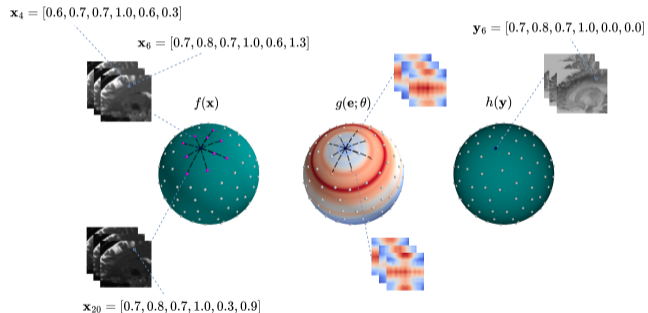
Diffusion MRI



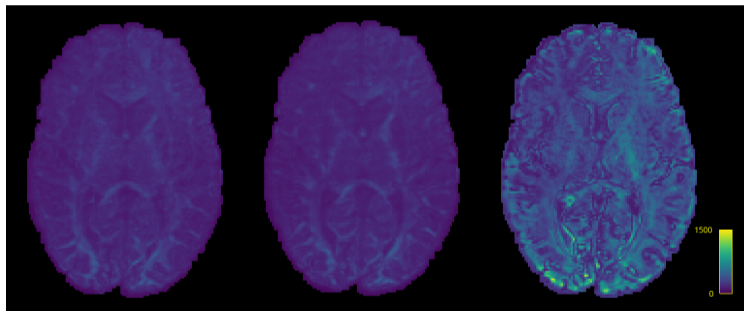
Angular Super-Resolution



Parametric Continuous Convolutions



Results



(a) RCNN

(b) PCCNN

(c) Q-space CGAN

dMRI mean absolute error (MAE)

Model	Parameters
PCCNN	0.77
RCNN	6.82
Q-Space CGAN	13.60

Total number of parameters, in millions, of different deep learning approaches.

Spatio-Angular Convolutions for Super-resolution in Diffusion MRI



github.com/m-lyon/dmri-pcconv