

ResShift: Efficient Diffusion Model for Image Super-resolution by Residual Shifting

Zongsheng Yue, Jianyi Wang, Chen Change Loy

MMLab@NTU, S-Lab for Advanced Intelligence

<https://www.mmlab-ntu.com/>

Motivation

➤ Current diffusion model (High resolution image \rightleftharpoons Random Gaussian Noise)

- Efficiency limitation due to the too long transition path.
- Fidelity issue due to the randomness in sampling.



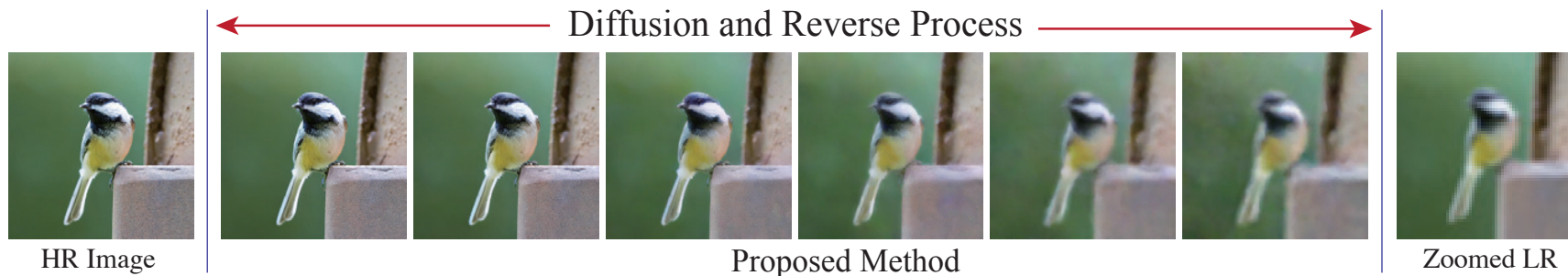
Motivation

➤ Current diffusion model (High resolution image \rightleftharpoons Random Gaussian Noise)

- Efficiency limitation due to the too long transition path.
- Fidelity issue due to the randomness in sampling.

➤ Proposed diffusion model (High resolution image \rightleftharpoons ***Low resolution image***)

- Improving efficiency by shifting the residuals between LR-HR image pairs.
- Achieving a better fidelity-realism trade-off.

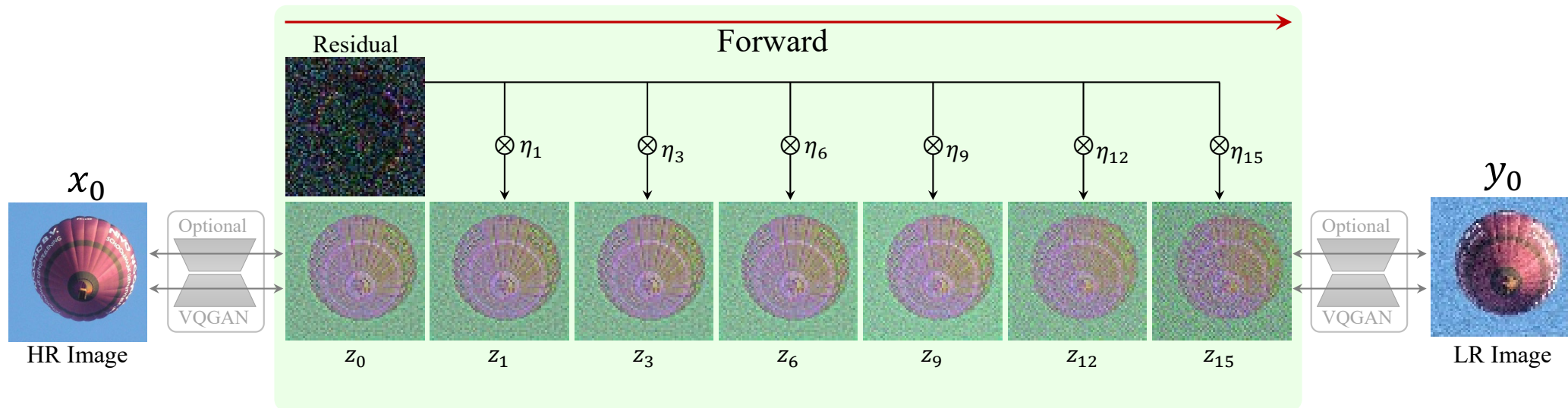


Model Design (Forward Process)

Shifting sequence: $\{\eta_i\}_{i=1}^T$, $\eta_1 \rightarrow 0$, $\eta_T \rightarrow 1$

$$q(x_t|x_0, y_0) = N(x_t; x_0 + \eta_t e_0, \kappa^2 \eta_t I), \quad e_0 = y_0 - x_0$$

where κ is a hyper-parameter controlling the *noise variance*.



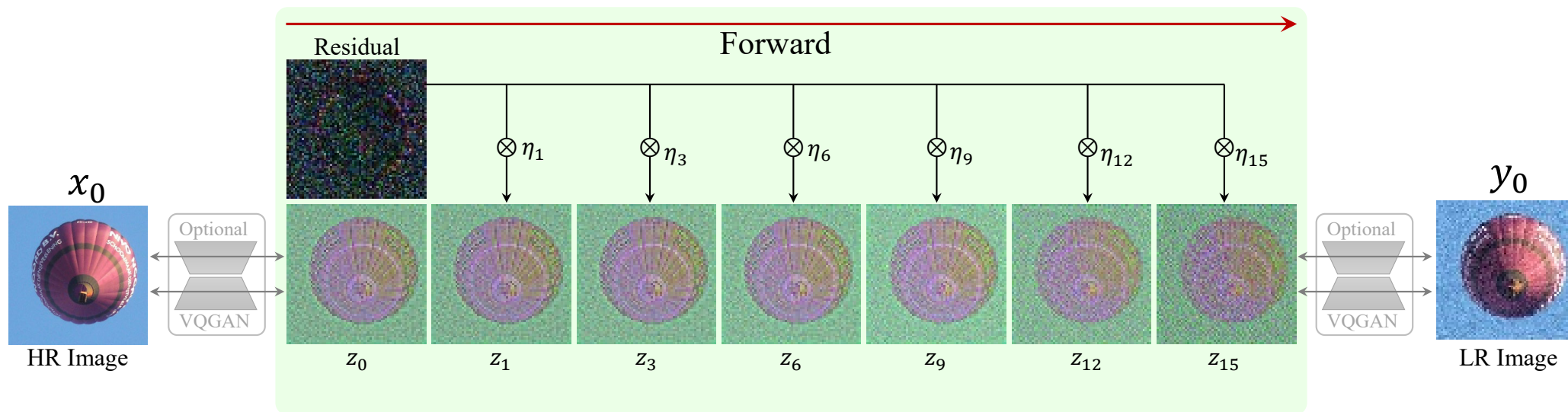
Model Design (Forward Process)

Extension to latent space:

$$q(x_t|x_0, y_0) = N(x_t; x_0 + \eta_t e_0, \kappa^2 \eta_t I), \quad e_0 = y_0 - x_0$$

$$q(z_t|z_0, g_0) = N(z_t; z_0 + \eta_t e_0, \kappa^2 \eta_t I), \quad e_0 = g_0 - z_0$$

$$z_0 = \text{Encoder}(x_0), \quad g_0 = \text{Encoder}(y_0)$$



Model Design (Reverse Optimization)


True posterior:

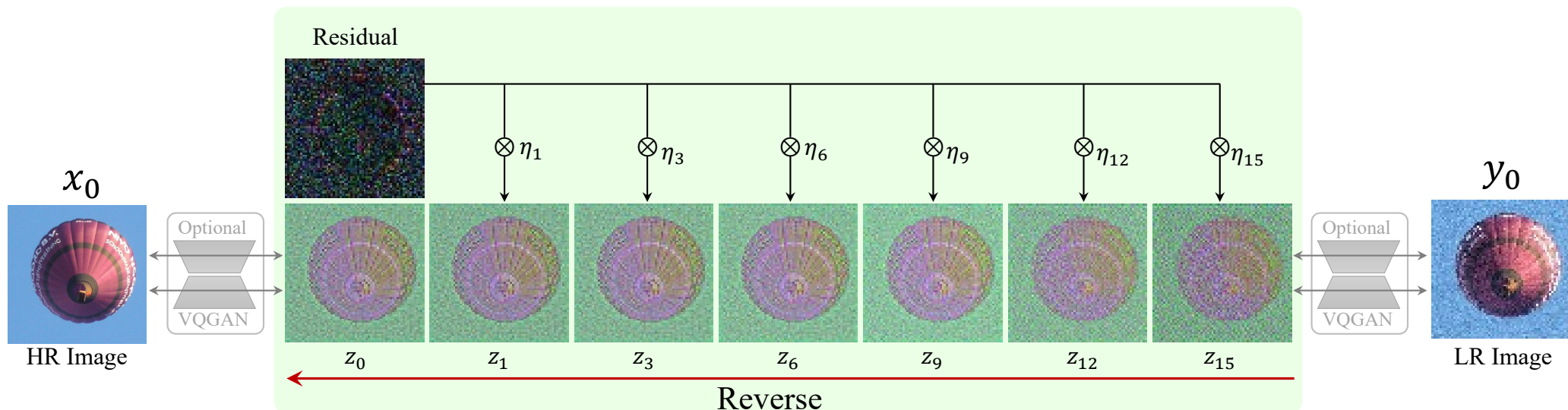
$$q(x_{t-1}|x_t, x_0, y_0) = N\left(x_{t-1} \mid \frac{\eta_{t-1}}{\eta_t} x_t + \frac{\alpha_t}{\eta_t} x_0, \kappa^2 \frac{\eta_{t-1}}{\eta_t} \alpha_t I\right)$$

Approximation:

$$p_\theta(x_{t-1}|x_t, y_0) = N\left(x_{t-1} \mid \mu_\theta(x_t, y_0, t), \kappa^2 \frac{\eta_{t-1}}{\eta_t} \alpha_t I\right)$$

$$\mu_\theta(x_t, y_0, t) = \frac{\eta_{t-1}}{\eta_t} x_t + \frac{\alpha_t}{\eta_t} f_\theta(x_t, y_0, t)$$

 Predicting x_0



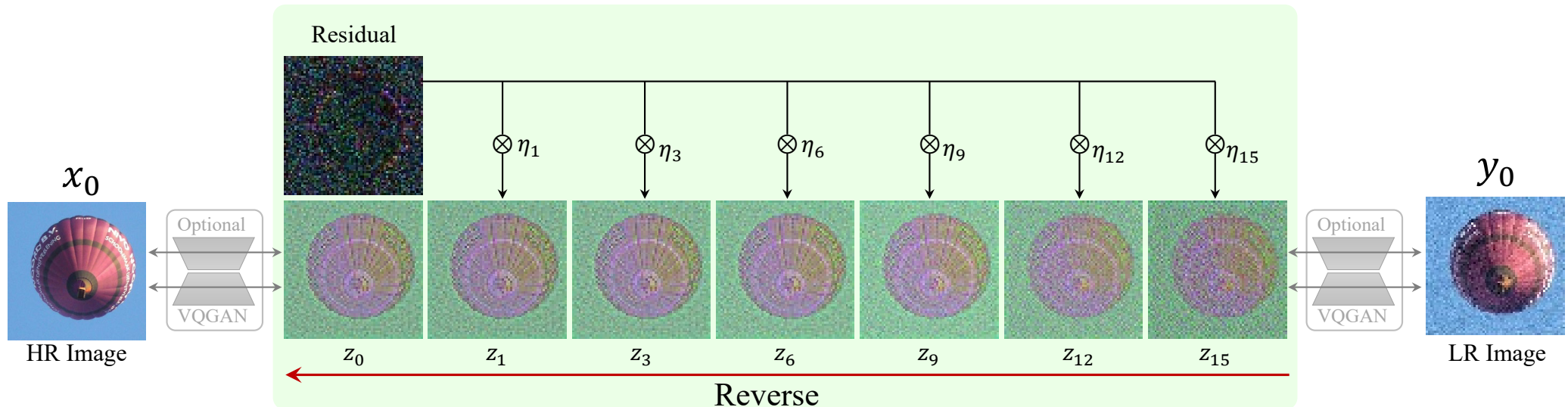
Model Design (Reverse Optimization)

Objective function:

$$\min_{\theta} \sum_t D_{KL}[q(x_{t-1}|x_t, x_0, y_0) || p_{\theta}(x_{t-1}|x_t, y_0)]$$



$$\min_{\theta} \sum_t w_t \|f_{\theta}(x_t, y_0, t) - x_0\|_2^2$$



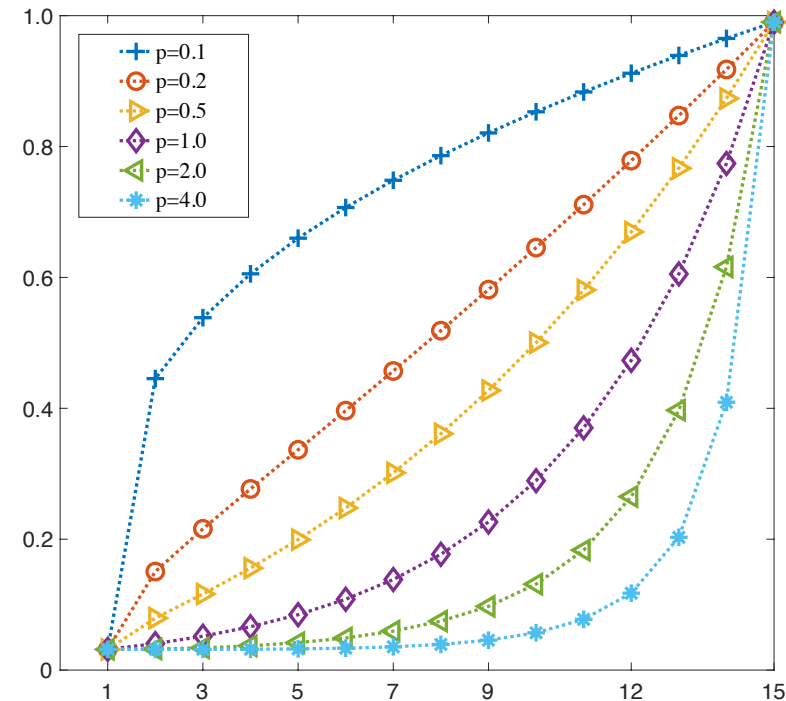
Model Design (Noise Schedule)

Shifting sequence: $\{\eta_i\}_{i=1}^T$, $\eta_1 \rightarrow 0$, $\eta_T \rightarrow 1$

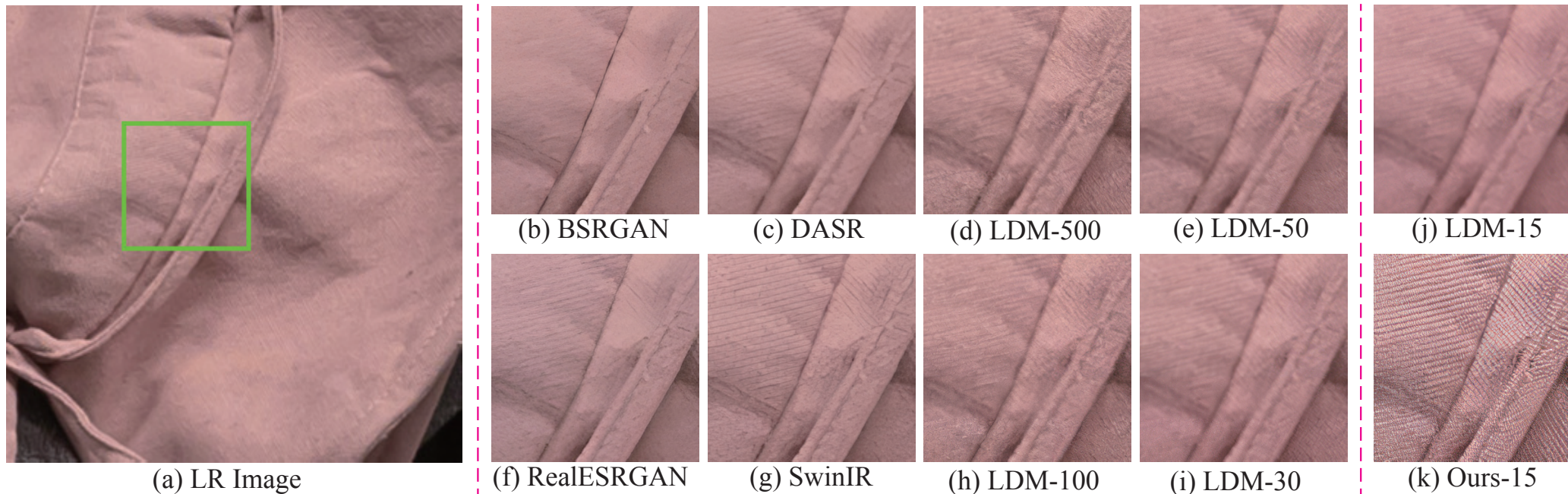
$$\sqrt{\eta_t} = \sqrt{\eta_1} \times b_0^{\beta_t}, \quad t = 2, \dots, T - 1$$

$$\beta_t = \left(\frac{t-1}{T-1} \right)^p \times (T-1)$$

$$b_0 = \exp \left[\frac{1}{2(T-1)} \log \frac{\eta_T}{\eta_1} \right]$$



Efficiency Evaluation

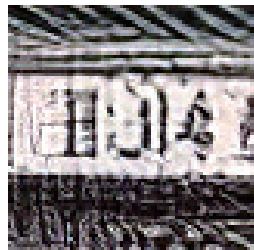


Metrics	Methods						
	LDM-15	LDM-30	LDM-100	LDM-200	LDM-500	LDM-1000	<i>ResShift</i>
LPIPS↓	0.269	0.248	0.244	0.245	0.246	0.248	0.231
CLIPQA↑	0.512	0.572	0.620	0.630	0.634	0.636	0.592
Runtime (s)	0.102	0.184	0.413	0.853	2.094	4.171	0.105
# Parameters (M)	113.60						118.59

Evaluation on Real-world Dataset



(a) LR Image



(b) ESRGAN



(c) RealSR-JPEG



(d) RealESRGAN



(e) BSRGAN



(f) DASR



(g) SwinIR



(h) LDM-100



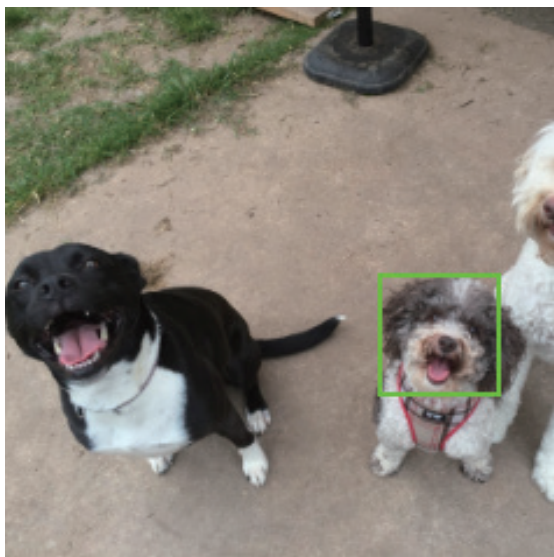
(i) LDM-30



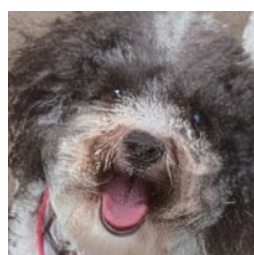
(j) LDM-15



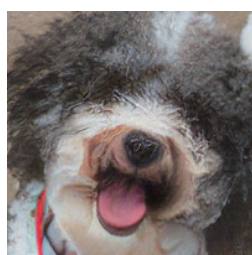
(k) *ResShift*-15



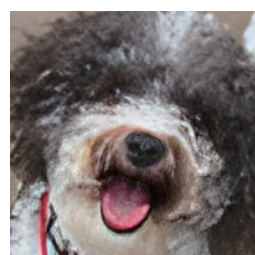
(a) LR Image



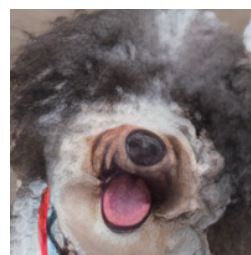
(b) ESRGAN



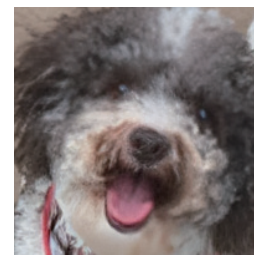
(c) RealSR-JPEG



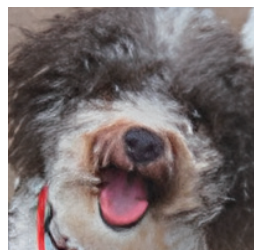
(d) RealESRGAN



(e) BSRGAN



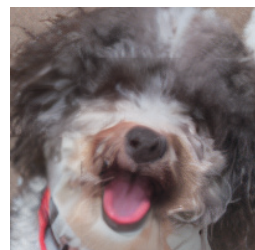
(f) DASR



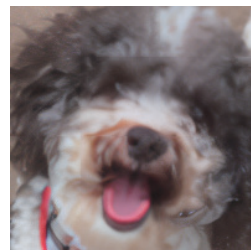
(g) SwinIR



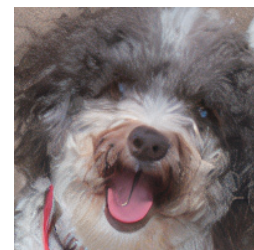
(h) LDM-100



(i) LDM-30



(j) LDM-15

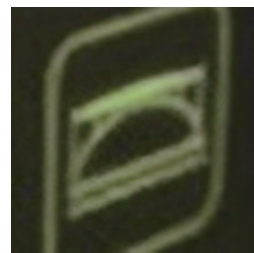


(k) *ResShift*-15

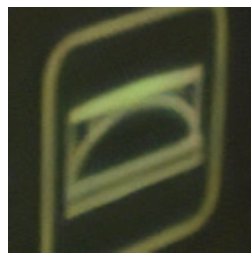
Evaluation on Real-world Dataset



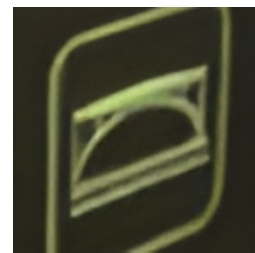
(a) LR Image



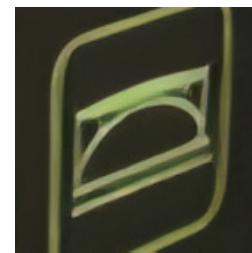
(b) ESRGAN



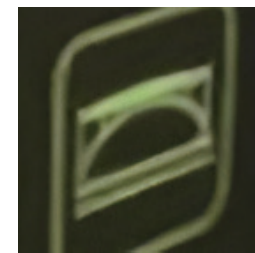
(c) RealSR-JPEG



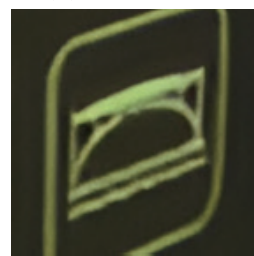
(d) RealESRGAN



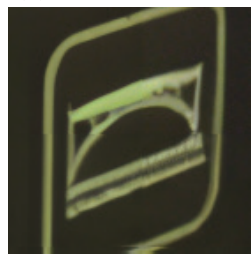
(e) BSRGAN



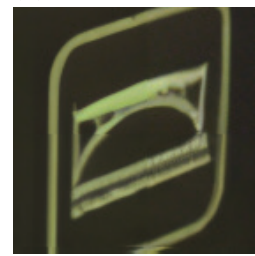
(f) DASR



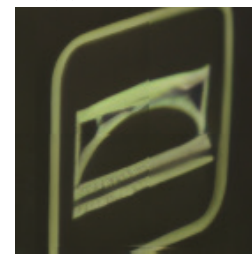
(g) SwinIR



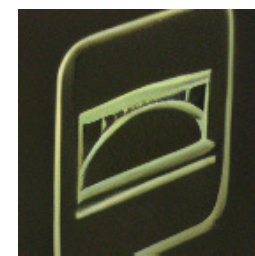
(h) LDM-100



(i) LDM-30



(j) LDM-15



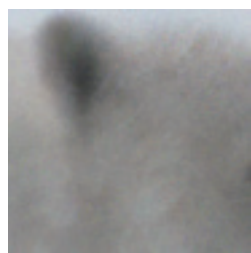
(k) *ResShift-15*



(a) LR Image



(b) ESRGAN



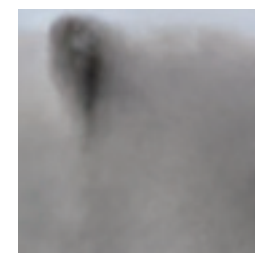
(c) RealSR-JPEG



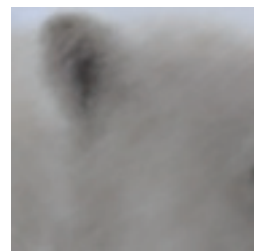
(d) RealESRGAN



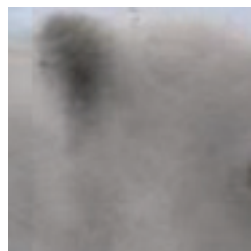
(e) BSRGAN



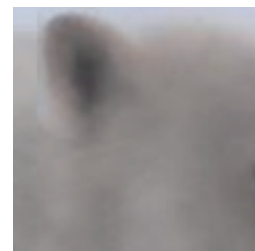
(f) DASR



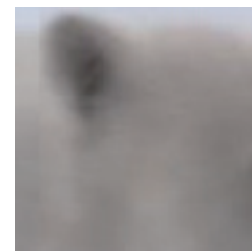
(g) SwinIR



(h) LDM-100



(i) LDM-30



(j) LDM-15



(k) *ResShift-15*



Paper & Code & Demos

Thanks!



<https://github.com/zsyOAOA>